

BIOLOGY

1. Match the following features to the animals. Which is the correct combination?
1. Open circulatory system 3. Earthworm 5. Nephridia
2. Closed circulatory system 4. Malpighian tubules 6. Cockroach
- A 1,3,4 and 2,5,6 B 1,4,6 and 2,3,5 C 1,3,5 and 2,4,6 D 1,5,6 and 2,3,4
2. Take two plants, keep plant A in very dry conditions and plant B in high humidity. Simultaneously, immerse the roots of both plants in water with a red dye. What would you observe?
 A Plant A turns redder than Plant B. C Neither plant turns red.
 B Plant B turns redder than Plant A. D Both plants turn equally red.
3. A population of finch birds with medium sized beaks colonizes an island with plants producing medium and large sized seeds. After a disease wipes out all the plants with medium sized seeds, what is most likely to happen to the finches?
 A They will become extinct. C Their beaks become smaller.
 B Their beaks will not change at all. D Their beaks will become larger.
4. If the population of a city of 100 people increases at an intrinsic rate of 0.1, but the city only has access to food and housing for 200 people, what will the current growth rate of the population be?
 A 9/year B Zero C 2/year D 5/year
5. Pick the INCORRECT statement regarding a mitochondrion,
 A The inner and outer membranes have identical sets of enzymes.
 B The mitochondrial matrix contains single circular DNA molecule.
 C The inner membrane forms many infoldings called cristae.
 D The mitochondrial matrix possesses 70S ribosomes.
6. Which of the following statements best describes the G₀ stage of the cell cycle?
 A Cells in this stage are dying.
 B Cells in this stage are metabolically active but not dividing.
 C Cells in this stage are highly proliferative.
 D Cells in this stage are proliferative but metabolically inactive.
7. *Erythroblastosis foetalis* can be avoided by
 A Administering anti-Rh antibodies to a Rh +ve woman before her first pregnancy.
 B Administering anti-Rh antibodies to a Rh +ve mother after her first Rh +ve child birth.
 C Administering anti-Rh antibodies to a Rh -ve woman before her first pregnancy.
 D Administering anti-Rh antibodies to a Rh -ve mother after her first Rh +ve child birth.
8. During an oxidative phosphorylation the terminal electron acceptor is ——(fill up the blank)
 A FAD B NAD⁺ C Oxygen D Cytochrome C
9. Immature lymphocytes are primarily found in which one of the following organs?
 A Peyer's Patches of small intestine B Spleen C Liver D Thymus

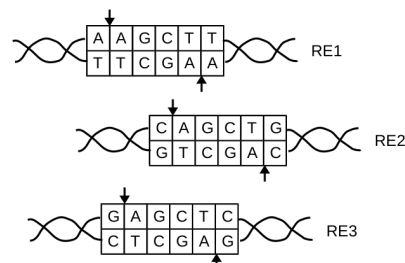
10. If an enzyme reaction follows the Michaelis Menten kinetics represented by the equation:

$$V_0 = V_{max} \cdot \frac{[S]}{K_M + [S]}$$

where, V_0 is the initial reaction velocity, V_{max} is the maximal reaction velocity, K_M is the Michaelis constant and $[S]$ is the substrate concentration. Which of the following statements is correct?

- A K_M is the concentration of the enzyme at the optimal pH.
- B K_M is the reaction velocity at half the optimal substrate concentration.
- C K_M is the concentration of substrate when the velocity of the reaction is half that of the maximal velocity.
- D K_M is the concentration of the enzyme at the optimal temperature.
11. Common cold is mostly caused by Rhinoviruses. Which of the following treatments will provide the best cure from this infectious agent?
- A A glass of Oral Rehydration Suspension (ORS) plus two tablets of streptomycin twice a day for three days.
- B Two tablets of amoxicillin twice a day for at least three days.
- C One tablet of amoxicillin plus one tablet of a pain killer four times a day for at least three days.
- D Adequate rest and a balanced diet for at least three days.
12. In human females, when does oogenesis begin?
- A At the time of puberty
- B During embryonic development
- C During ovulation
- D At the time of birth
13. Which one of the following statements best defines properties of a compound epithelium?
- A It is multilayered and mainly protects from chemical and mechanical stresses.
- B It is multilayered and covers the outer lining of secretory glandular epithelium.
- C It is multilayered and help binding tissues together and their eventual organization.
- D It is multilayered and actively participates in secretion and absorption.
14. Which one of the following pairs of genotype and phenotype ratios will be obtained in F₂ generation for Snapdragon plants exhibiting incomplete dominance for red and white flower color traits?
- A 3:1 and 1:2:1 B 1:2:1 and 3:1 C 3:1 and 3:1 D 1:2:1 and 1:2:1

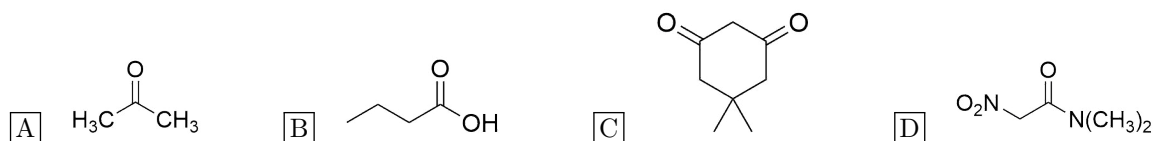
15. Provided below are recognition sequences for restriction enzymes 1 (RE1), 2 (RE2) and 3 (RE3). Arrows indicate the positions where the enzymes digest on the two strands. Which of the following can the RE1 digested DNA ligate to?



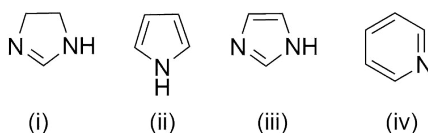
- A All three RE1, RE2 and RE3 digested DNA.
- B Only to RE1 digested DNA.
- C Only to RE1 and RE3 digested DNA.
- D Only to RE1 and RE2 digested DNA.

CHEMISTRY

16. In which one of the following cases will the α -hydrogen NOT be abstracted on treatment with one equivalent of base?



17. Arrange the following compounds in order of decreasing basicity.



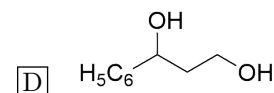
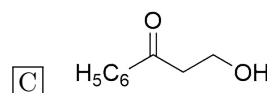
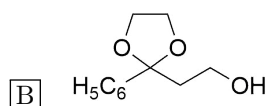
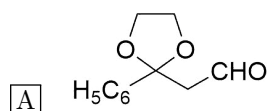
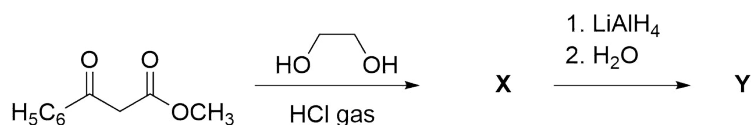
A (i) > (iv) > (iii) > (ii)

C (i) > (iii) > (iv) > (ii)

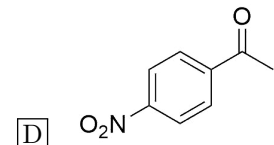
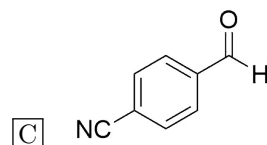
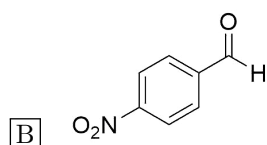
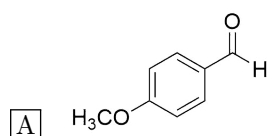
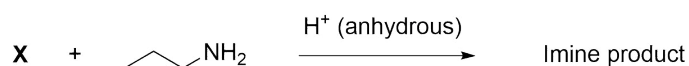
B (iii) > (i) > (iv) > (ii)

D (ii) > (i) > (iii) > (iv)

18. In the following reaction sequence, predict the structure of the final product **Y**.



19. For the following reaction, identify the carbonyl compound **X** that shows the highest reactivity.



20. SnCl_2 dissolves in a solution containing Cl^- ions to form $[\text{SnCl}_3]^-$. What would be the geometry of $[\text{SnCl}_3]^-$?

A Trigonal planar

B T-shaped

C Trigonal pyramidal

D Tetrahedral

21. How many nodes are there in the antibonding molecular orbital formed by two $2s$ atomic orbitals?

A 1

B 2

C 0

D 3

29. Consider a hypothetical case in which the charge of a proton is twice as that of an electron. Using this hypothetical case, how many protons (P), neutrons (N) and electrons (E) would a neutral ^{23}Na atom contain?

- A P = 12, N = 11, E = 23
- B P = 11, N = 12, E = 23
- C P = 11, N = 12, E = 11
- D P = 11, N = 12, E = 22

30. The magnitude of reversible work done by an ideal gas in four different processes: isothermal expansion, adiabatic expansion, constant pressure expansion, and free expansion are W_i , W_a , W_p , and W_f respectively. Choose the right order of sequence for the magnitude of the work done. (Change in the volume is same for all the processes.)

- A $W_i > W_p > W_a > W_f$
- B $W_p > W_i > W_a > W_f$
- C $W_i > W_p > W_f > W_a$
- D $W_p > W_a > W_i > W_f$

MATHEMATICS

31. The number of solutions of the equation $2\sin^2 x + 1 = 3\sin x$ in the interval $(0, \pi)$ is

- A 0. B 2. C 1. D 3.

32. For $n \geq 2$, the number of onto functions from the set $\{1, 2, \dots, n\}$ to the set $\{1, 2\}$ is

- A 2^n . B $2^n - 2$. C $n!$. D $2^n - 1$.

33. Let $f : \mathbf{R} \rightarrow \mathbf{R}$ be a differentiable function such that $f'(0) = 1$ and

$$f(x+y) = f(x)f(y) \text{ for all } x, y \in \mathbf{R}.$$

Which of the following is true?

- A f is a decreasing function but f' is an increasing function.
 B Both f and f' are increasing functions.
 C f is an increasing function but f' is a decreasing function.
 D Both f and f' are decreasing functions.

34. The number of points of intersection of the curves $x^2 + 8y^2 = 4$ and $x^2 + y^2 = 1$ is

- A 0. B 4. C 1. D 2.

35. The coefficient of x^9 in $(x^2 - \frac{1}{3x})^9$ is

- A -3 . B $-\frac{56}{9}$. C $-\frac{28}{9}$. D $\frac{28}{9}$.

36. The roots of the polynomial $x^3 - 39x^2 + 471x - 1729$ are in an arithmetic progression. Which of the following is a common difference of the progression?

- A 6 B 19 C 13 D 7

37. Let $f : \mathbf{R} \rightarrow \mathbf{R}$ be defined as

$$f(x) = \begin{cases} \frac{e^{3x} - e^x - e^{2x} + 1}{x^2} & \text{if } x > 0, \\ a & \text{if } x = 0, \\ \frac{1 - \cos(2x)}{x^2} & \text{if } x < 0. \end{cases}$$

The value of a for which f is continuous at 0 is

- A 1. B 2. C 0. D 3.

38. Let S be a set with 3 elements. What is the probability of choosing an ordered pair (A, B) of subsets of S such that A and B are disjoint?

- A $\frac{1}{2}$ B $\frac{26}{64}$ C $\frac{27}{64}$ D $\frac{1}{8}$

39. Consider the functions y_1 and y_2 satisfying

$$\frac{dy_1}{dx} = -y_2, \quad \frac{dy_2}{dx} = y_1, \quad y_1(0) = 1, \quad y_2(0) = 0.$$

The set $S = \{(y_1(x), y_2(x)) : x \in \mathbf{R}\}$ lies on a

- A hyperbola. B straight line. C circle. D parabola.

40. A function f satisfying $f \circ f \circ f(x) = x$ for all $x \in \mathbf{R}$ is

- A onto but not one–one.
 B neither one–one nor onto.
 C one–one and onto.
 D one–one but not onto.

41. The function $f(x) = \sin x + \frac{1}{\sin x}$ in the interval $(0, \pi)$ has a

- A local minima at $\pi/2$.
 B local maxima at $\pi/3$.
 C local minima at $\pi/6$.
 D local maxima at $\pi/4$.

42. Let p be a polynomial with real coefficients such that $\int_0^1 p(t) dt = 0$. Which of the following statements is always true?

- A p has no roots in the interval $[0, 1]$.
 B All roots of p lie in the interval $[0, 1]$.
 C p has exactly one root in the interval $[0, 1]$.
 D p has a root in the interval $[0, 1]$.

43. For a complex number z , let $(1 + z)^{15} = a_0 + a_1z + \dots + a_{15}z^{15}$. The value of

$$(a_0 - 4a_2 + 16a_4 + \dots - 2^{14}a_{14})^2 + (2a_1 - 8a_3 + 32a_5 \dots - 2^{15}a_{15})^2$$

is

- A 2^{30} . B 2^{15} . C 1. D 5^{15} .

44. Let A be a 3×3 matrix which has determinant 3 and satisfies the equation $A^2 - 7A + 4I = 0$. The value of $|\det(A - 2I)|$ is

- A 5. B 1. C 3. D 9.

45. Consider the functions

$$g(x) = \begin{cases} 1 & \text{if } x \in [-1, 1], \\ 0 & \text{otherwise} \end{cases}$$

and

$$f(x) = \lim_{h \rightarrow 0} \frac{1}{2h} \int_{x-h}^{x+h} g(y) dy.$$

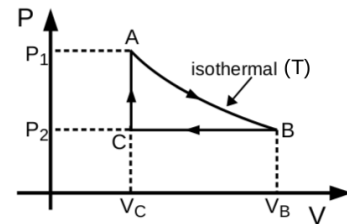
The value of $f(1)$ is

- A $1/2$. B -1 . C 1. D 0.

PHYSICS

46. One mole of an ideal gas is taken around the complete cycle as shown in the PV-diagram. Considering the universal gas constant R, the work done by the gas in one complete cycle is

- A $RT \ln \frac{V_B - V_C}{V_C}$.
- B $(P_1 - P_2)V_C + P_2(V_B - V_C)$.
- C $RT \ln \frac{V_B}{V_C} - P_2(V_B - V_C)$.
- D 0.

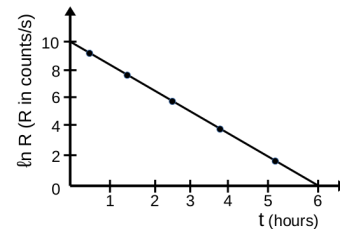


47. A Copper wire of length L_{Cu} , Young's modulus Y_{Cu} , and diameter d is hung from the ceiling. An Aluminium wire of length L_{Al} , Young's modulus Y_{Al} , and of same diameter d is joined end-to-end at the free end of the Copper wire. If under the action of a load applied at the free end of the Aluminium wire the net elongation is ΔL , the applied load is

- A $\frac{\pi d^2 \Delta L (Y_{Cu} L_{Al} - Y_{Al} L_{Cu})}{4 L_{Cu} L_{Al}}$.
- B $\frac{\pi d^2 \Delta L (Y_{Cu} L_{Al} + Y_{Al} L_{Cu})}{4 L_{Cu} L_{Al}}$.
- C $\frac{\pi d^2 Y_{Cu} Y_{Al} \Delta L}{4 (Y_{Cu} L_{Al} + Y_{Al} L_{Cu})}$.
- D $\frac{\pi d^2 Y_{Cu} Y_{Al} \Delta L}{4 (Y_{Cu} L_{Al} - Y_{Al} L_{Cu})}$.

48. From the given plot of the decay rate R versus time t of some radioactive nuclei, the half life of the nuclei in hours can be estimated to be

- A 2.5.
- B 3.
- C $\frac{3}{5} \ln 2$.
- D $\frac{5}{3} \ln 2$.



49. A particle of mass m_1 and velocity \vec{v}_i collides head-on with a stationary particle of mass m_2 . After collision the velocity of both particles is \vec{v}_f . The energy lost in the collision is

- A $\frac{1}{2} m_1 v_i^2 [1 - \frac{m_1}{m_1 + m_2}]$.
- B $\frac{1}{2} m_2 v_i^2 [1 - \frac{m_1}{m_1 + m_2}]$.
- C $\frac{1}{2} (m_1 + m_2) (v_i - v_f)^2$.
- D $\frac{1}{2} m_1 v_i^2 [1 - \frac{m_2}{m_1 + m_2}]$.

50. Particles of mass m_1 and m_2 initially sitting at the same position, start moving simultaneously at $t = 0$ with velocities \vec{v}_1 and \vec{v}_2 , respectively. After a time $t = t_0$ the angular momentum of the particle of mass m_2 with respect to the particle of mass m_1 is

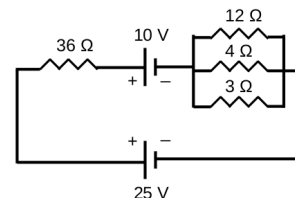
- A $|\vec{v}_1 - \vec{v}_2|^2 \frac{m_1 m_2}{m_1 + m_2} t_0$.
- B $|\vec{v}_1 - \vec{v}_2|^2 \frac{m_2^2}{m_1} t_0$.
- C $|\vec{v}_1 - \vec{v}_2|^2 m_2 t_0$.
- D 0.

51. If the refractive index of the material of a prism is μ and its angle of minimum deviation is $\pi/3$ then the angle of the prism is

- A $2 \cot^{-1} (\frac{1-2\mu}{\sqrt{3}})$.
- B $2 \cot^{-1} (\frac{2\mu-1}{\sqrt{3}})$.
- C $2 \cot^{-1} (\sqrt{3} - 2\mu)$.
- D $2 \cot^{-1} (2\mu - \sqrt{3})$.

52. The current through the 36Ω resistor in the given circuit is

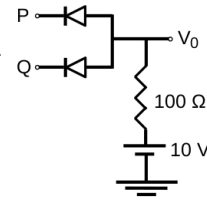
- A $2/5$ A
- B $1/3$ A
- C $2/3$ A
- D $70/75$ A



53. The dimension of $1/RC$, where R is the resistance and C is the capacitance, is the same as that of

- A Current.
- B Charge.
- C Frequency.
- D Time.

54. In the given circuit, the input voltages at P and Q could be either 0 V or 10 V. Use the fact that a diode under forward bias is a short circuit, and under reverse bias is an open circuit. The truth table of the circuit will be that of

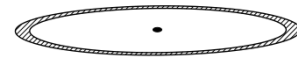


- A an AND Gate. C a NAND Gate.
 B an OR Gate. D a NOR Gate.

55. What should be the closest approximate radius of a celestial body twice as massive as the sun so that the escape speed from the celestial body is equal to the speed of light? (The mass of sun is 2×10^{30} Kg, speed of light is 3×10^8 m/s, and universal gravitational constant $G = 7 \times 10^{-11}$ N m²/Kg².)

- A 300 km B 90 km C 6 km D 1 km

56. Two bar magnets A and B, and a non-magnetic bar C, all of same mass and dimensions, are dropped in an identical manner one by one through the center of a copper loop held horizontally (as shown in the figure). The times taken by the bars A, B, and C to reach the ground are t_A , t_B , and t_C , respectively. Which of the following relations is correct?

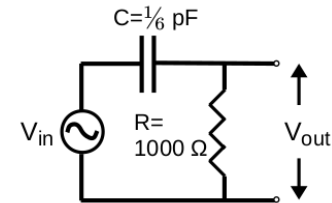


- A $t_A > t_B > t_C$ C $t_A = t_B < t_C$
 B $t_A = t_B > t_C$ D $t_A < t_B < t_C$

57. A metal, whose temperature coefficient of resistivity is $5 \times 10^{-4} \text{ } ^\circ\text{C}^{-1}$, is heated from $100 \text{ } ^\circ\text{C}$ to $1100 \text{ } ^\circ\text{C}$. By what factor does the mobility of electrons in the metal change due to this change in temperature?

- A 3/2 B $\sqrt{3}/2$ C $\sqrt{2}$ D 2/3

58. In the given circuit, what is the closest approximate frequency at which the ratio $V_{\text{out}}/V_{\text{in}}$ is $1/\sqrt{2}$?

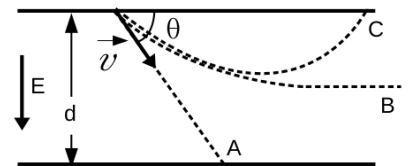


- A 0.16×10^6 Hz C 10^9 Hz
 B 1.6×10^6 Hz D 10^6 Hz

59. The transverse displacement at position x and time t in a string due to a travelling wave is given by $y(x, t) = 3.0 \cos(\pi x - 4\pi t)$ cm, where x is in centimeters and t is in seconds. Which of the following statements is wrong?

- A Maximum value of transverse velocity of any point is 12π cm/s and wavelength is 0.2 m.
 B Speed of wave propagation in the +ve x -direction is 4π cm/s.
 C Transverse velocity at $t = 0$ and $x = 0.25$ cm is $6\sqrt{2}\pi$ cm/s.
 D Maximum value of transverse acceleration of any point is $48\pi^2$ cm/s².

60. An electron of mass m_e and charge e is projected with a speed v making an angle θ with respect to the top electrode of a parallel plate capacitor as shown in the figure. Considering only the effect of the downward constant electric field E on the electron's motion, which of the following statements is correct.



- A Electron moves along trajectory C with a time of flight given by $(m_e v / eE) \sin^2 \theta$.
 B Electron moves along trajectory C with a maximum horizontal displacement given by $(m_e v^2 \sin 2\theta) / eE$.
 C Electron moves along trajectory A with a horizontal displacement given by $v \cos \theta \sqrt{2d m_e / eE}$.
 D Electron moves along trajectory B with a final velocity $v \cos \theta$ parallel to the electrodes.